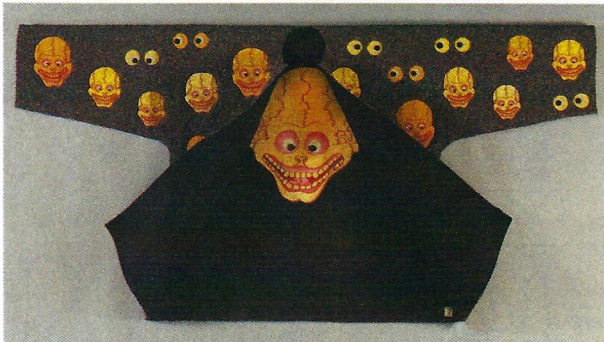


108 Contemporary Opens in Tulsa, Oklahoma

108 Contemporary, a new gallery in Tulsa, featured well-known international tapestry artist Jon Eric Riis in its grand opening in April. Riis's tapestries can be found in the permanent collection of The Art Institute of Chicago as well as the American Craft Museum in New York and the Renwick Gallery of the

Smithsonian American Museum of Art in Washington, D.C., among others.

Formerly Brady Craft Alliance, 108 Contemporary's new exhibition gallery is set to showcase fine contemporary craft in a wide range of media including fiber, glass, paper, ceramics, metals, mixed media, and wood. Visit <www.108contemporary.org> for more information.



Jon Eric Riis. *Black Skull Coat*. Handwoven tapestry, beaded, sewn; silk and metallic threads, beads, pearls. Photograph by Tom Abraham.



Kisah Baru Lama: An Old New Story, by Emily Schubert, for *R.I.P. V.I.P.* Photograph by Tania Garcia.

Maryland Institute College of Art Exhibitions

The Maryland Institute College of Art (MICA) presents two exhibitions in April which push the boundaries of fashion and art, allowing students to showcase their abilities through the creation of inventive clothing inspiring thought and action, and also explore how fiber and textiles can be used as means of artistic expressions and societal engagement. *Ex Tempore*, the 20th Annual Benefit Fashion Show, highlights garments that link styles and trends across generations. As vintage fashions and ideas influence new and dynamic styles, clothing is reborn and redefined. The experimental fashion exhibition *R.I.P. V.I.P. (Rest In Peace Very Important Person)* showcases designs by students presenting their own unique visions in innovative fashion and costume design, claiming fashion should be recognized as a cultural phenomenon, not just a few voices speaking for an industry. For more information, see <www.mica.edu>.

HGA's Small Expressions 2013

June 1 through September 7, 2013

Kavanagh Gallery, Fine Line Creative Arts Center, St. Charles, Illinois

Opening Reception:

June 1, 2013, 5:30 - 8:00 p.m.

Gallery Talk by:

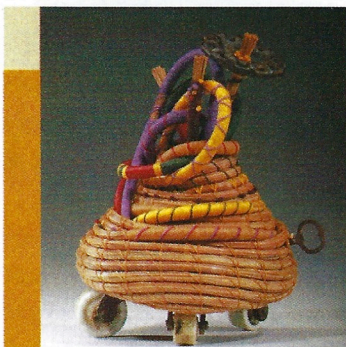
Juror, Laura Foster Nicholson, 7:00 p.m.

Fine Line Creative Arts Center
6N158 Crane Road
St. Charles, IL 60175
(630) 584-9443

Hours: Monday – Saturday 10 a.m. to 5 p.m.
Closed Sundays
Visit www.fine-line.org



For more information about HGA-sponsored exhibits, please call (678) 730-0010 or visit HGA's Web site <www.weavespindye.org>



Peggy Wiedemann, *Basketmobile*. Photo by Jan Seeger.



Brenda Backman, *Linas, Threads Pebbles*. Photo by Bob Elbert.



Shannon Weber, *Winter Catch*. Photo by Chris Beard.