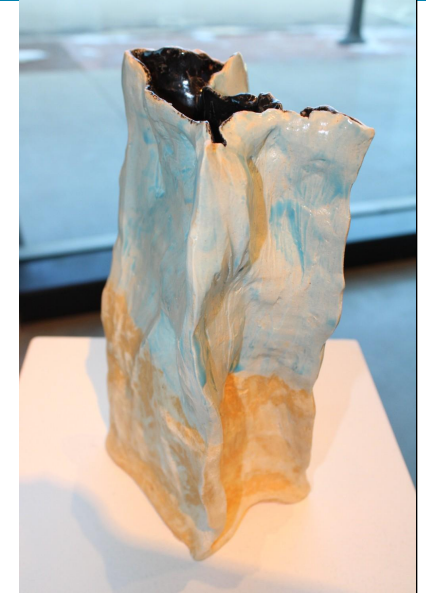


Craft Kit #46: SLAB BUILD



Constant Strangeness I (Bucket of Blood), Constant Strangeness IV (Bucket of Blood), Constant Strangeness III (Bucket of Blood), Constant Strangeness V (Bucket of Blood) by Francheska Alcántara

Francheska Alcántara and kara lynch
STRANGE & OPPOSITIONAL
FEBRUARY 3 - MARCH 19, 2023

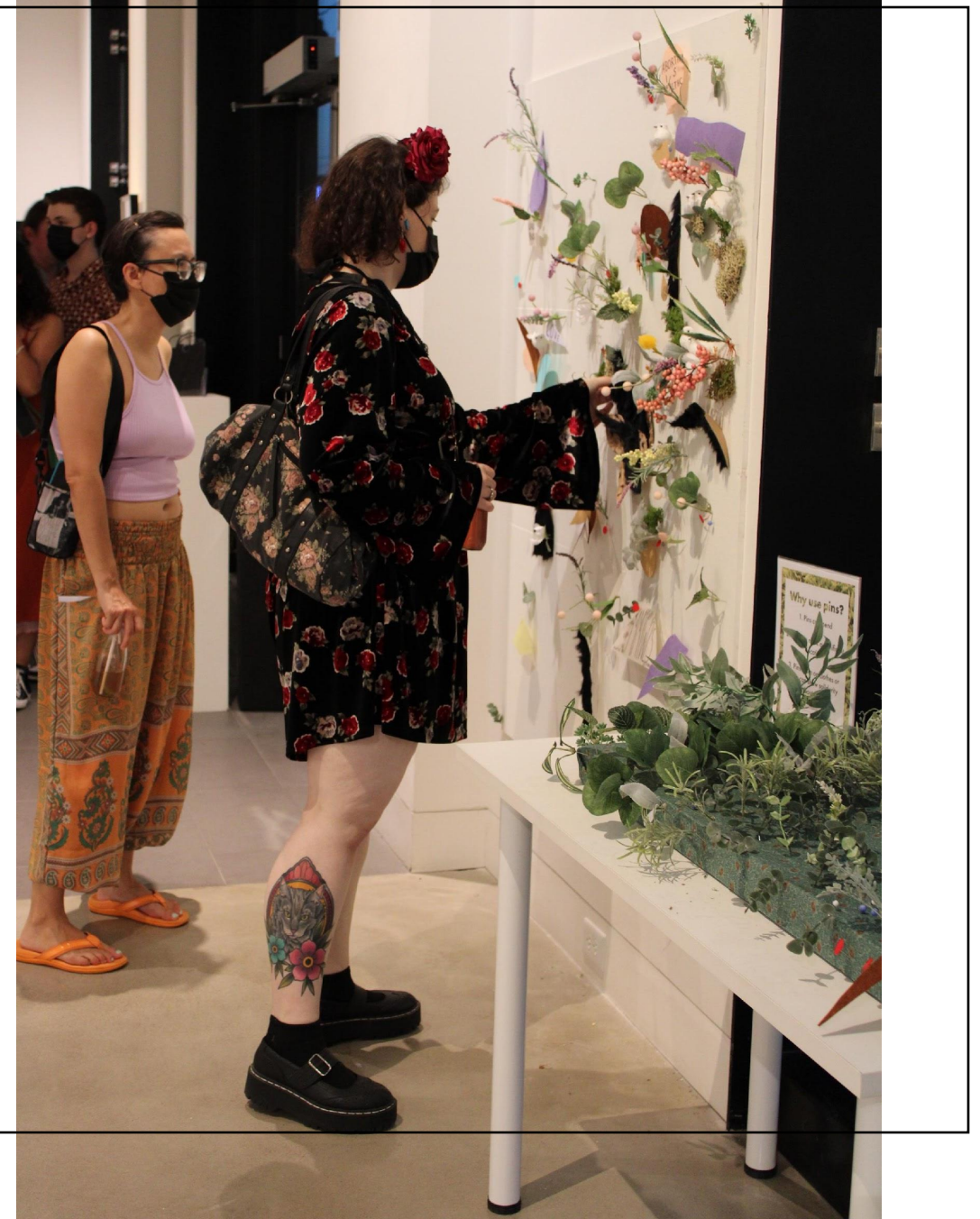
108 CONTEMPORARY

Art. Craft. Design.

Welcome to 108 Contemporary!

We are a non-profit gallery in Tulsa, Oklahoma that specializes in contemporary craft. From February 3 through March 19, 2023 we are hosting the *Strange & Oppositional* exhibition by two artists, Francheska Alcántara and kara lynch. Let's look at the exhibition before you make your very own slab build!

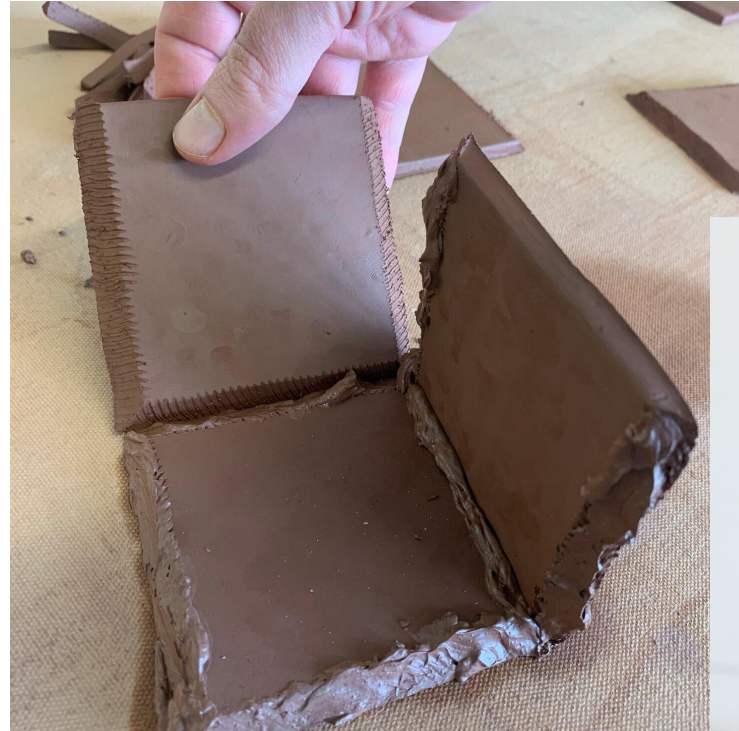
On the way we'll ask ourselves some questions. There are no wrong answers! When you view fine art and craft, your experience will be unique and personal. Perhaps the person next to you will have different answers to the same questions. By hearing each other's perspectives, we may find new and exciting ways to interpret each work.



What is a Slab Build?

Slab building is when an artist cuts out shapes from flattened clay and joins them together to make a sculpture.

Many of the artworks on display in our gallery are slab builds. Our new show features two artists who both make art about memories and communities.



Francheska Alcántara

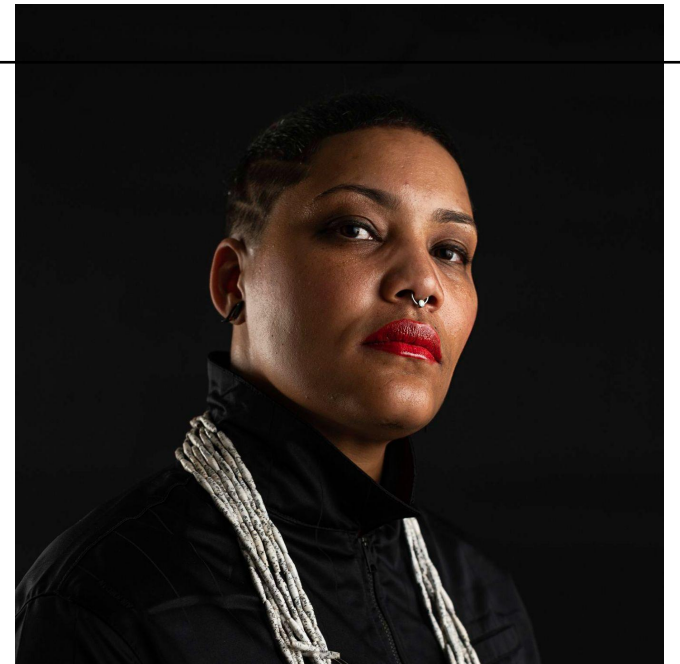
Francheska Alcántara is a queer, black, non-binary artist from the Caribbean, and the history of these communities is very important to their work. Alcántara's art explores how history can be remembered through objects. The artist uses lots of different materials in their artworks, including ceramic (baked clay), paper, and even silver!

Alcántara worked in the Bronx in New York before moving to Tulsa. In college, Francheska Alcántara studied sculpture, painting, and art history.

kara lynch

kara lynch (who uses lowercase letters on purpose), makes art about the passage of time. Her art celebrates communities working together and how shared memories build lasting connections. This is inspired by the artist's own experiences learning about black, queer, and feminist histories. Her artwork uses ordinary objects like pillowcases, jars, cans, paper, fabric, and tree branches to show how everyday objects are an important part of communities.

kara lynch has worked all over the United States and abroad as an artist, teacher, college professor, and researcher.



Who is kara lynch?

kara lynch moved from New York to Tulsa in 2020. Her work uses ordinary things like pillowcases, jars, videos, and tree branches to create art about memories, community, and the passage of time.

- What communities are you a part of? Consider your neighborhood, family heritage, sports teams, music fans, hobbies, and more!
- What seemingly ordinary objects might be important to your community?
- If you made a flag for yourself, what would it look like? Consider using your ideas as inspiration for your slab build!



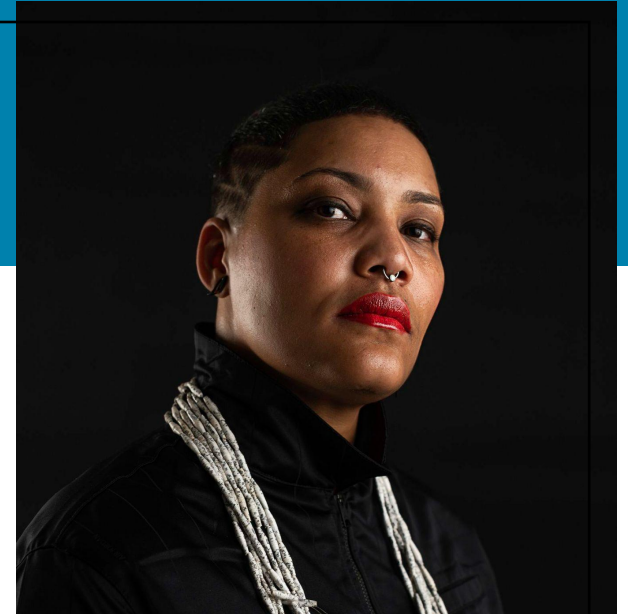
Who is Francheska Alcántara?



Alcántara moved to Tulsa from New York in 2020. They were inspired by the different overlapping histories of Tulsa, from native lands to country music to Black Wall Street. They created these sculptures to reflect on the different sides of Tulsa.

- How can objects be part of history?
- What objects hold an important place in your memories of your community?
- Are there shapes, colors, or textures that are an important part of your history? Consider using them in your slab build!

Constant Strangeness III (Bucket of Blood) by Francheska Alcántara



Photography by Tulsa Arts Fellowship

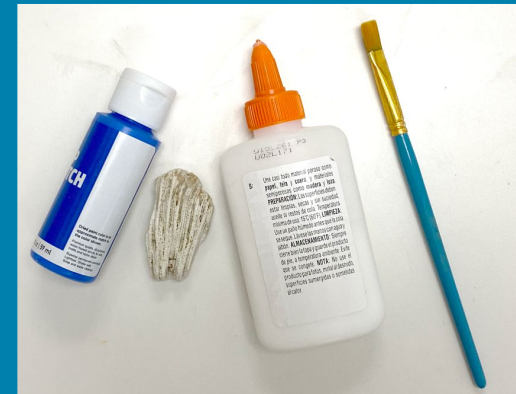
SLAB BUILD

Step-by-Step Instructions



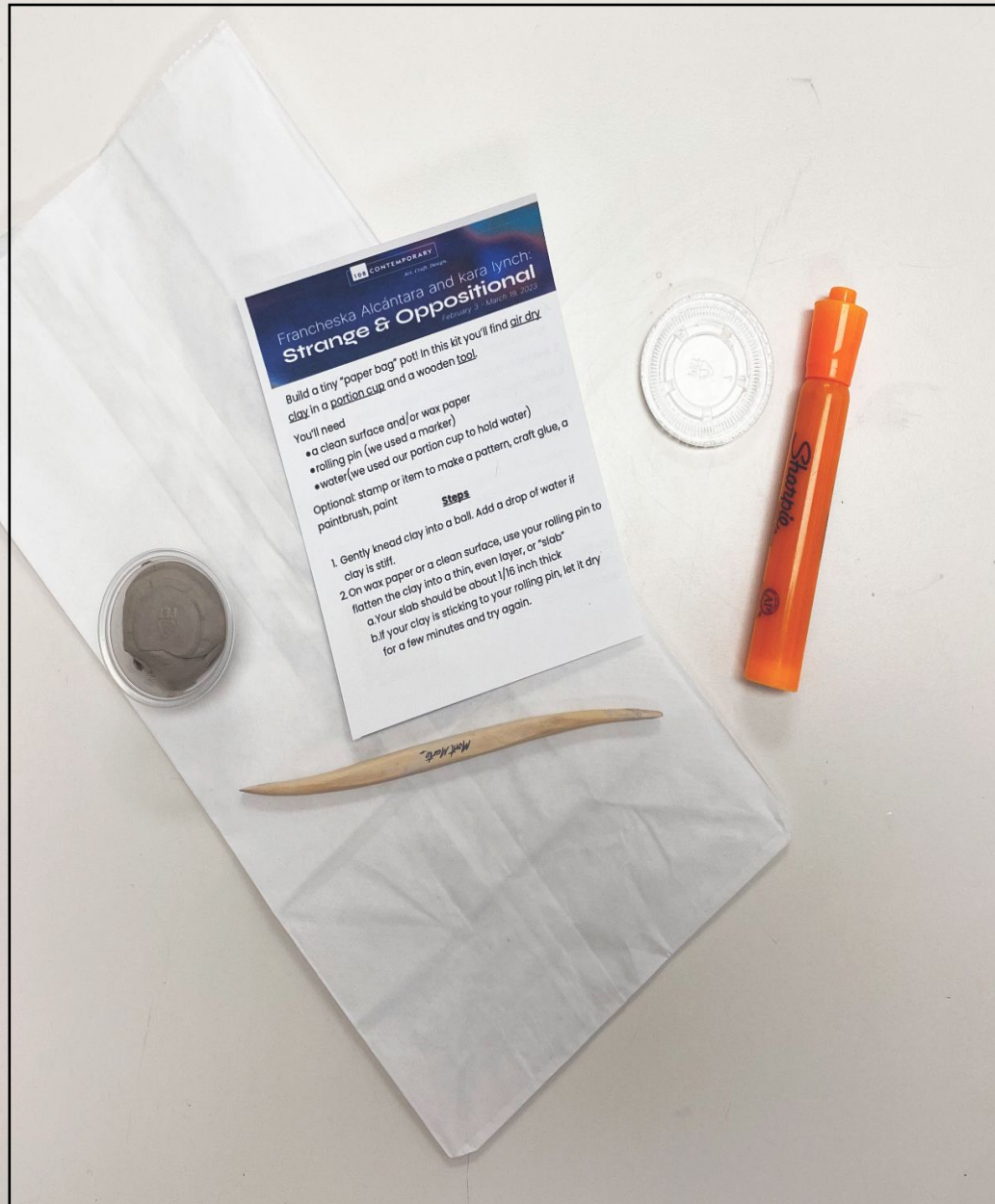
MATERIALS

- Air dry clay
- Wooden tool
- Rolling pin (we used a marker)
- Water



Optional

- Glue
- Paint
- Paintbrushes
- Textured object



Step #1

Gently knead the clay into a ball. Add a drop of water if the clay is stiff.



Step #2

On wax paper or a clean surface, use your rolling pin to flatten the clay into a thin, even layer.

Your slab should be about 1/16th inch thick.

If your clay sticks to your rolling pin, let it dry for a few minutes and then try again.

Optional: Make a pattern on the clay with your tool or another item.



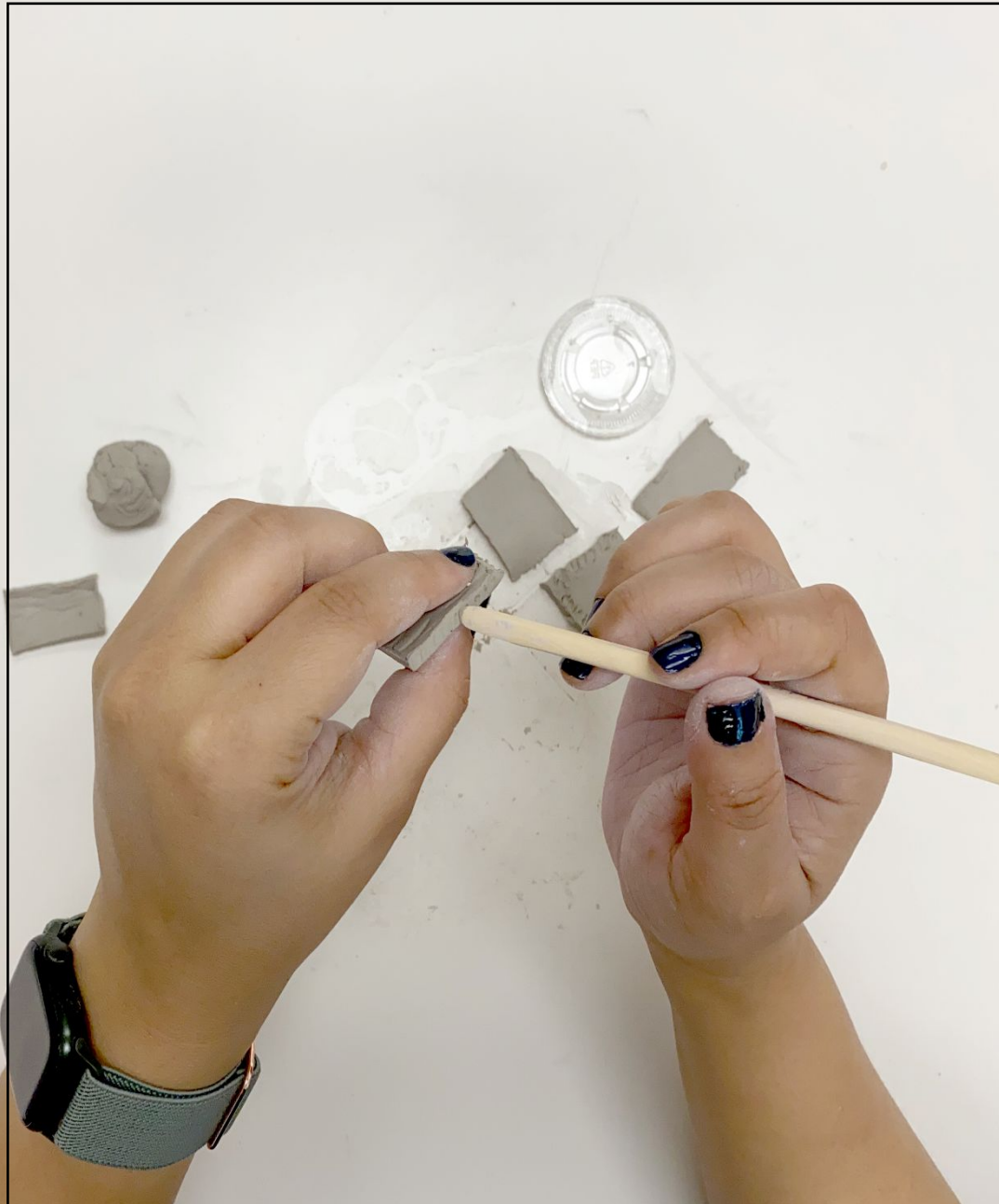
Step #3

Cut clay into 5 pieces : 4 sides and 1 base.



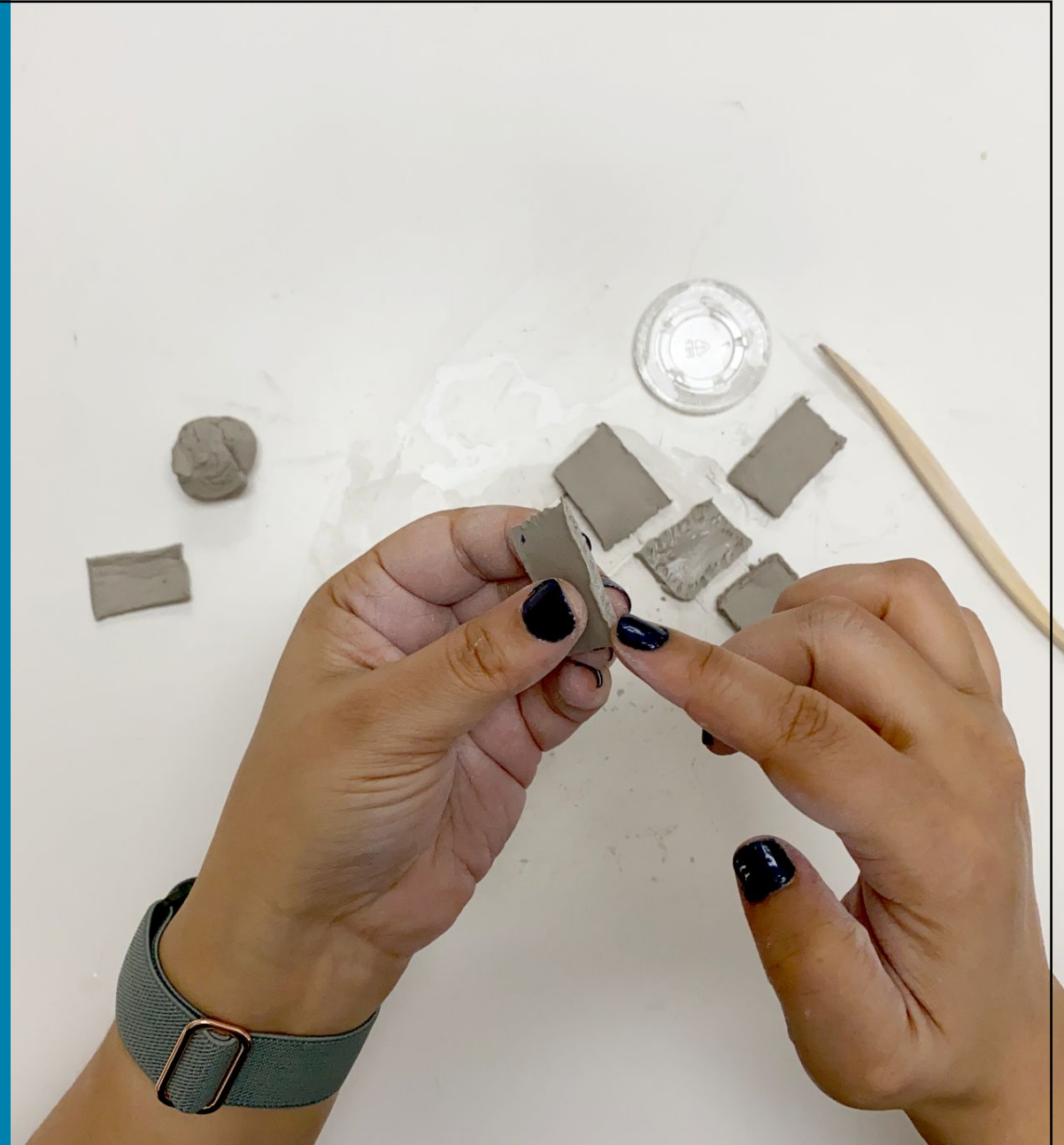
Step #4

“Score” (make shallow marks with your tool) the edges where the pieces will attach to each other.



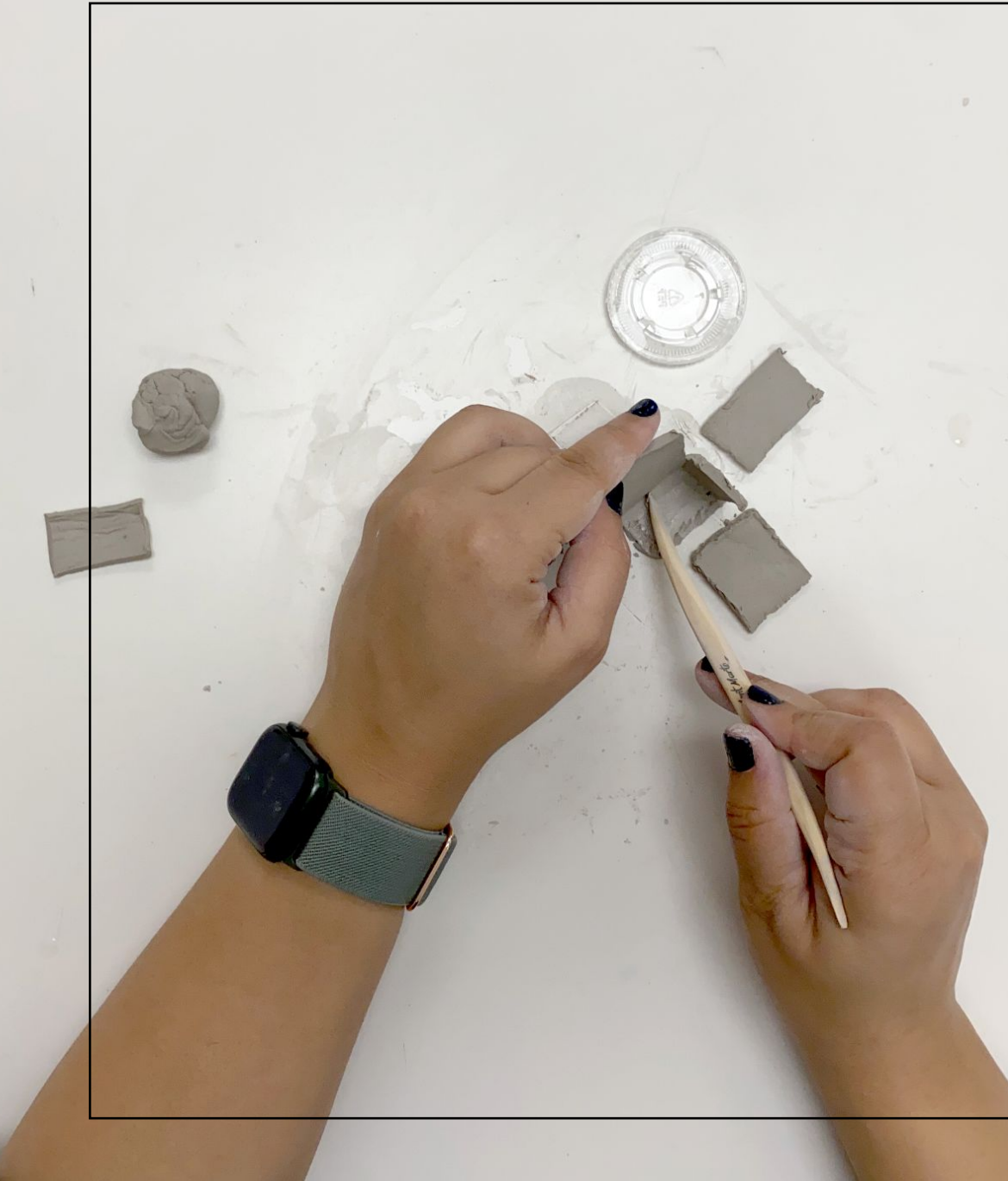
Step #5

Wet your finger and run it over the score marks.



Step #6

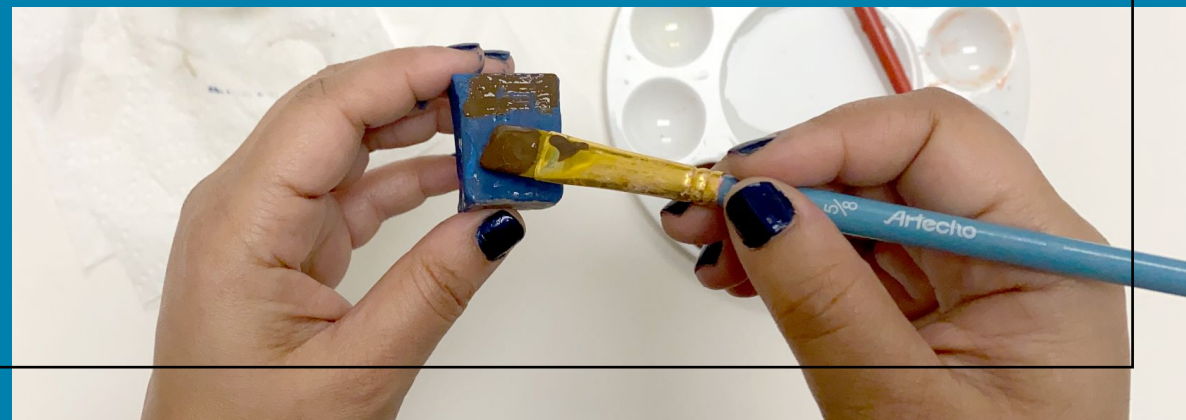
Attach the pieces together and use the tool to press the edges together.



Step #7

Once all four sides have been attached, let the pot dry overnight.

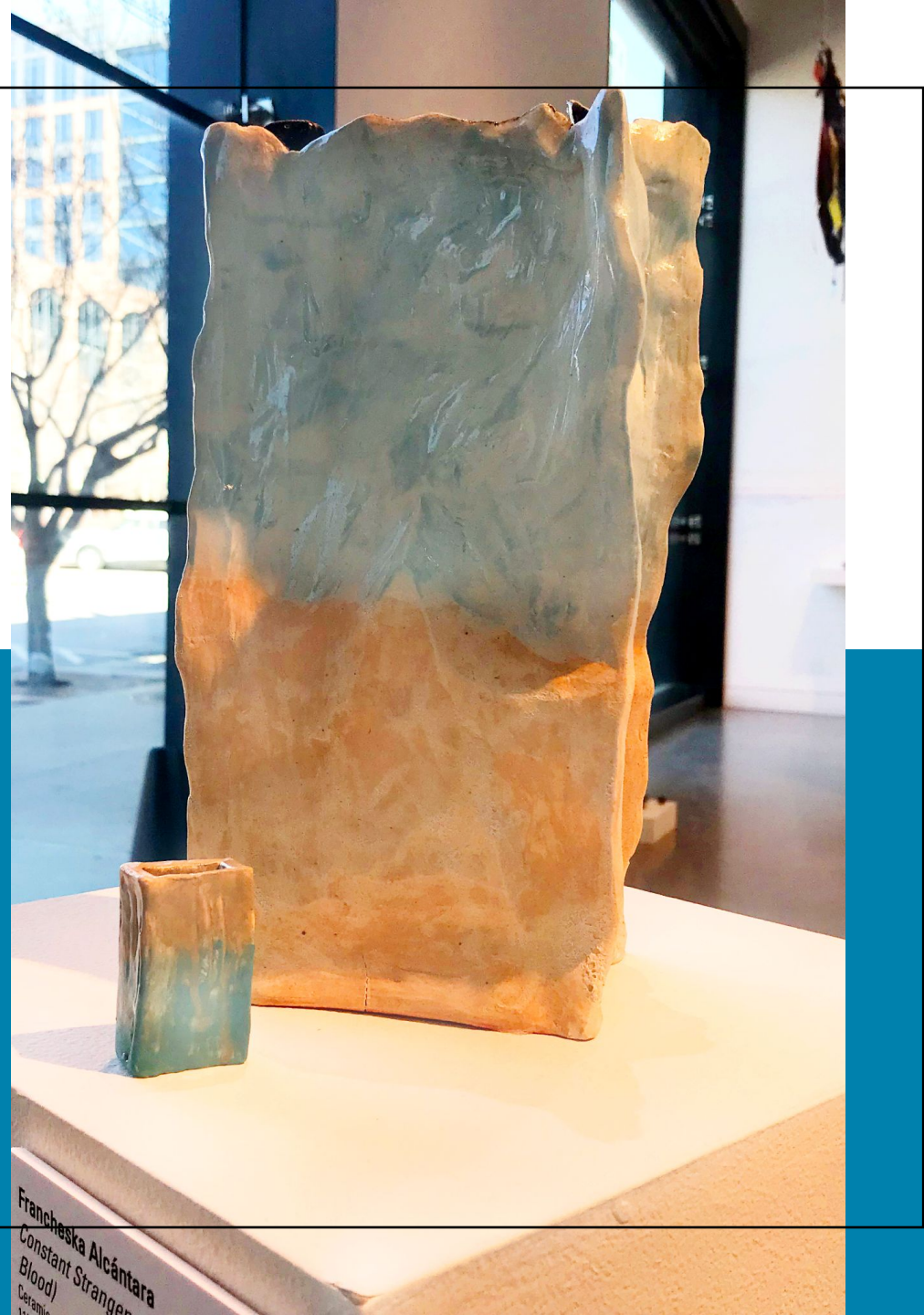
Optional: Seal the piece by brushing craft glue mixed with water over your piece. Paint with craft paint once the glue is completely dry.



Step #8

Display your Slab Build
with pride!

Share your Slab Build with us on social
media by tagging @108contemporary and
using the hashtag #108craftkits!



Francheska Alcántara
Constant Stranger
(Blood)
Ceramic
2014

Other Resources

Learn about our other Craft Kits:

- <https://108contemporary.org/craft-kits/>

Strange & Oppositional Walkthrough:

- https://youtu.be/3JwLDRV_bt8

Slab Sculpture Step-by-Step Video Instructions:

- <https://youtu.be/qmbLxQ84nhI>

National Core Arts Standards

VA:Cr1.2.21

Make art or design with various materials and tools to explore personal interests, questions, and curiosity.

VA:Cr1.2.31

Apply knowledge of available resources, tools, and technologies to investigate personal ideas through the art-making process.

VA:Cr3.1.6a

Reflect on whether personal artwork conveys the intended meaning and revise accordingly.

VA:Pr4.1.2a

Categorize artwork based on a theme or concept for an exhibit.

VA:Re.7.1.4a

Compare responses to a work of art before and after working in similar media.

State Education Agency Directors of Arts Education (SEADAE) on behalf of NCCAS. *National Core Arts Standards* (2014). <http://www.nationalartsstandards.org>.